

Our services

GACCESS - XML/API Web Service

- API**
- real time inventory information and booking operation
 - using the SOAP 1.1 protocol
 - providing XML interfaces for request and response messages
 - following OTA XML standard schemas with some elements added or eliminated
 - XML/API transaction spec is "PULL" type

9 APIs

- | | | |
|---------------------|--------------------|----------|
| • Hotel Search | • Tour Search | • Cancel |
| • Hotel Reservation | • Tour Reservation | |
| • Hotel Modify | • Tour Modify | |
| • Reservation Read | • Itinerary Read | |

Master Synchronization

- providing master information as TSV file (tab-delimited format)
- using SFTP protocol, providing products information/rate plan /inventory /price able to be downloaded
- providing the whole master files and difference files.

17 Master Files

- English
- Simplified Chinese
- Traditional Chinese
- Korean

- | | | |
|--------------------|-----------------------|-----------|
| • Hotel | • Tour | • Generic |
| • Hotel Restaurant | • Tour Plan | • Picture |
| • Hotel Building | • Tour Option | |
| • Hotel Room | • Tour Option Pattern | |
| • Hotel Plan | • Tour Arrangement | |
| • Hotel Option | • Tour Inventory | |
| • Hotel Inventory | • Tour Rate | |
| • Hotel Room Rate | | |

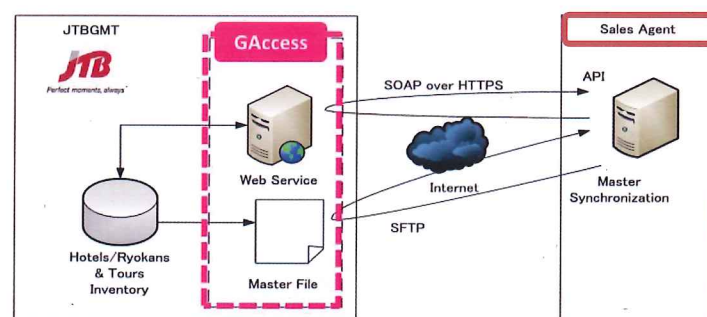
GENESIS2

- Agent booking portal website
- Back system of XML connectivity

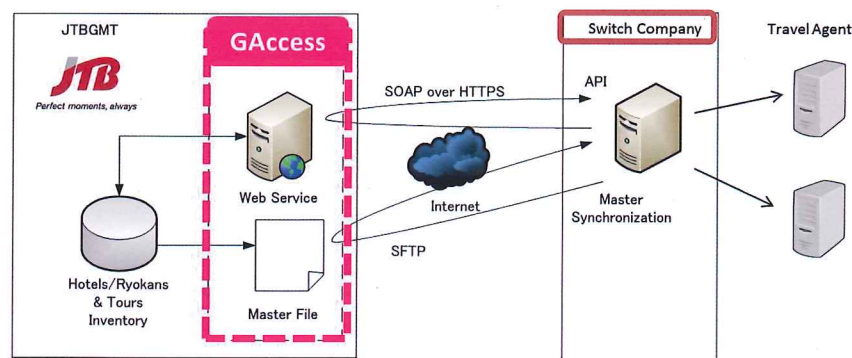
- | | |
|--|---|
| • A wide variety of contents | • Confirmation vouchers, quotations and itineraries able to be downloaded |
| • Offering hotel/tours exclusively by your company | • Credit card payment |
| • User friendly interface by multiple languages | |
| • Instant confirmation | |

2 ways for XML connectivity

Direct integration

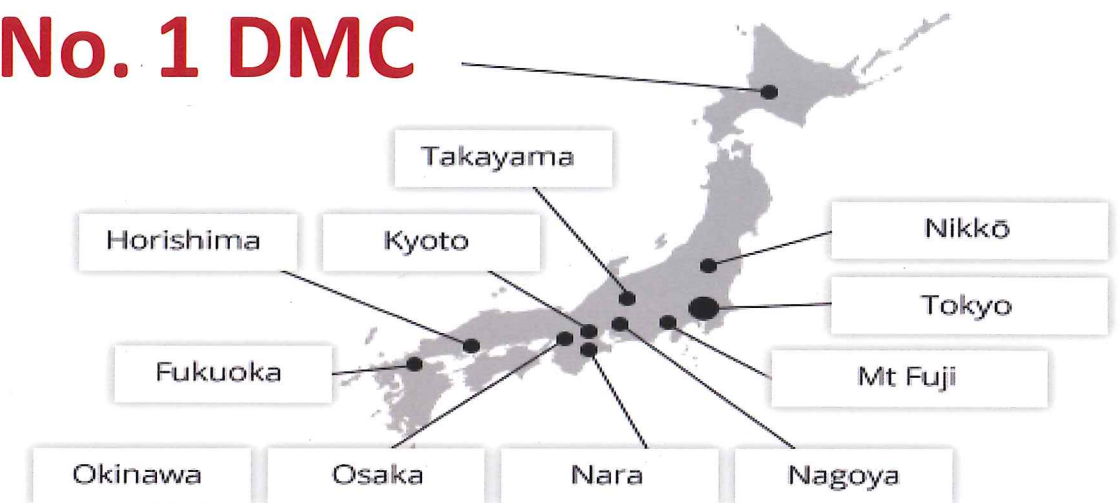


3rd party integration



Our Products

Japan's No. 1 DMC



6,000+

contracted accommodations

Hotels / Ryokans(Japanese-style Inns)

80,000+

room/night allotment

1,000+

Tours

2 brands **SUNRISE TOURS** **EXPERIENCE JAPAN**
Including SIT, Transfers, entrance tickets , meal coupons & etc.

Our Team

Clients

- Over 1,000 clients using our online systems (including our agent website) all over the world

Experienced Global Team

- a global team with excellent operational support
- multi-lingual staff offering 7 languages

IT support

- a experienced team of excellent and knowledgeable support
- technical support and expert advice for your API in development and for live clients

Contact

websolution@gmt.jtb.jp

<http://www.jtbgmt.com/en/whoweare/services/online>

websolution@gmt.jtb.jp | +81 3 57965466

B2B Travel Provider For Your Best Online Travel Solution